

The Impact of Caffeine on Memory

Emily Chappellear

Cassa Drury

Many people rely on caffeine as part of their daily routine to induce the feeling of wakefulness. However, the effects of caffeine on various brain functions, such as memory, remains unclear. To study the impact of caffeine on memory and attention, we conducted a pilot study on individuals with varying levels of caffeine consumption. Each individual completed a survey, memory test, and reaction time test. The results did not elucidate clear trends or significant differences between those who consumed caffeine and those who did not. This study suggests that caffeine intake does not have a direct impact on memory, but a correlation between reaction time variability and memory suggested that more research could provide deeper insights into the effects of various levels of caffeine consumption.

Citation

Chappellear E, Drury C. (2020). The Impact of Caffeine on Memory. *The Journal of Science and Medicine*; 3(Special Issue):1-6. <https://doi.org/10.37714/josam.v3i0.76>.

Introduction

Caffeine is the most used drug in the world and many studies have shown its impact on brain function. Due to its widespread use, it is important to study the effects of caffeine and possible implications of the use of it. Caffeine has been shown to have a connection to behavioral changes such as increased anxiety. However, it is unclear as to the impact that caffeine might have on memory. A previous study revealed that caffeine could enhance memory performance in young adults at particular times of day [1]. In this study, we wanted to investigate if caffeine had any impact on memory, and if so, if the form of caffeine consumed made any difference.

Caffeine has been shown to reduce reaction time and such a decrease has been well established in the literature. However, studies have suggested the mechanism through which this occurs is not in fact an increase in motor ability, but through an increase in attention span [2,3]. Because of this, reaction time variability is an appropriate metric for caffeine's impact on attention span and wakefulness. Presumably, attention span and capacity for working memory (including the short-term storing, processing, and recall of information) are intertwined functions as both relate to the ability to code new information into the brain.

Short term and working memory tests have been shown to be a good, simple, cost efficient metric of cognitive ability, and although often used on older adults to determine the extent of cognitive decline, memory tests retain usefulness with younger individuals [2,4]. Memory has been studied extensively with relation to attention deficit hyperactivity disorder (ADHD) creating a logical and scientifically relevant connection between these two cognitive processes. Because of this, an online working memory test was a clear choice to examine caffeine's impact on these related functions.

We decided to examine a cohort of individuals ranging in caffeine usage to determine if there was a significant correlation to caffeine, memory, and reaction time. Additionally, we recorded whether or not the subject consumes sugar with their caffeine (sugar in coffee or sugary caffeinated soda drinks) to maintain an awareness of confounding factors that might be impacting brain function. Each of these factors has a wide breadth of literature associated with their effects on the brain and

theoretically could illuminate interesting correlations between one another.

Methods

A survey was distributed (18 participants) to determine the current consumption of caffeine where the subject indicated if they consume on average 0, 1, 2, 3, 4, 5+ units of caffeine daily (including coffee, tea, caffeinated sodas), where 1 unit corresponds to 100mg caffeine (or the amount in a typical 8oz cup of coffee). The subject indicated if they consume caffeine with added sugar (of any kind). After the subject completed the survey, they completed a reaction time test and a memory test. The subjects recorded their reaction time and reaction time variability scores, as well as the results from the memory test. A Brain Gauge was used to measure reaction time and corresponding reaction time variability. The memory test that was used was an online working memory loss test that flashes an assortment of photos at a rapid pace [4]. To limit bias, the subjects were instructed to choose the “fast” version of the test, and select “Test 2: Nature Pictures”. The subject was asked to click the picture if it had been repeated in the sequence of photos. The subject then reported the results from the test, which included percent accuracy and average reaction time.

To analyze the data, we used Excel to plot Brain Gauge reaction time variability and memory scores for caffeine users versus non-caffeine users. The raw data was plotted in scatter plots to show the general trends, while the averages were plotted with bar graphs to determine if the two groups were significantly different from each other. In addition to Excel plots, we used MATLAB to perform a sequential sums ANOVA analysis. The model statement was chosen to analyze the memory scores and reaction variability with caffeine.

Results

Figure 1 and Figure 2 display the plots created in Excel. Figure 1 (A) shows the raw data plot of memory test score against amount of caffeine, and Figure 1 (B) shows the raw data plot of reaction time variability. The plots show no clear trend of correlation between caffeine and memory scores or reaction time variability, as subjects who reported consuming no caffeine performed similarly to those who do consume caffeine. However, the subject that reported the highest caffeine intake (3 units) had the highest reaction time variability, as shown in Figure 1 (B). A high reaction time variability measurement indicates a lack of consistency between trials.

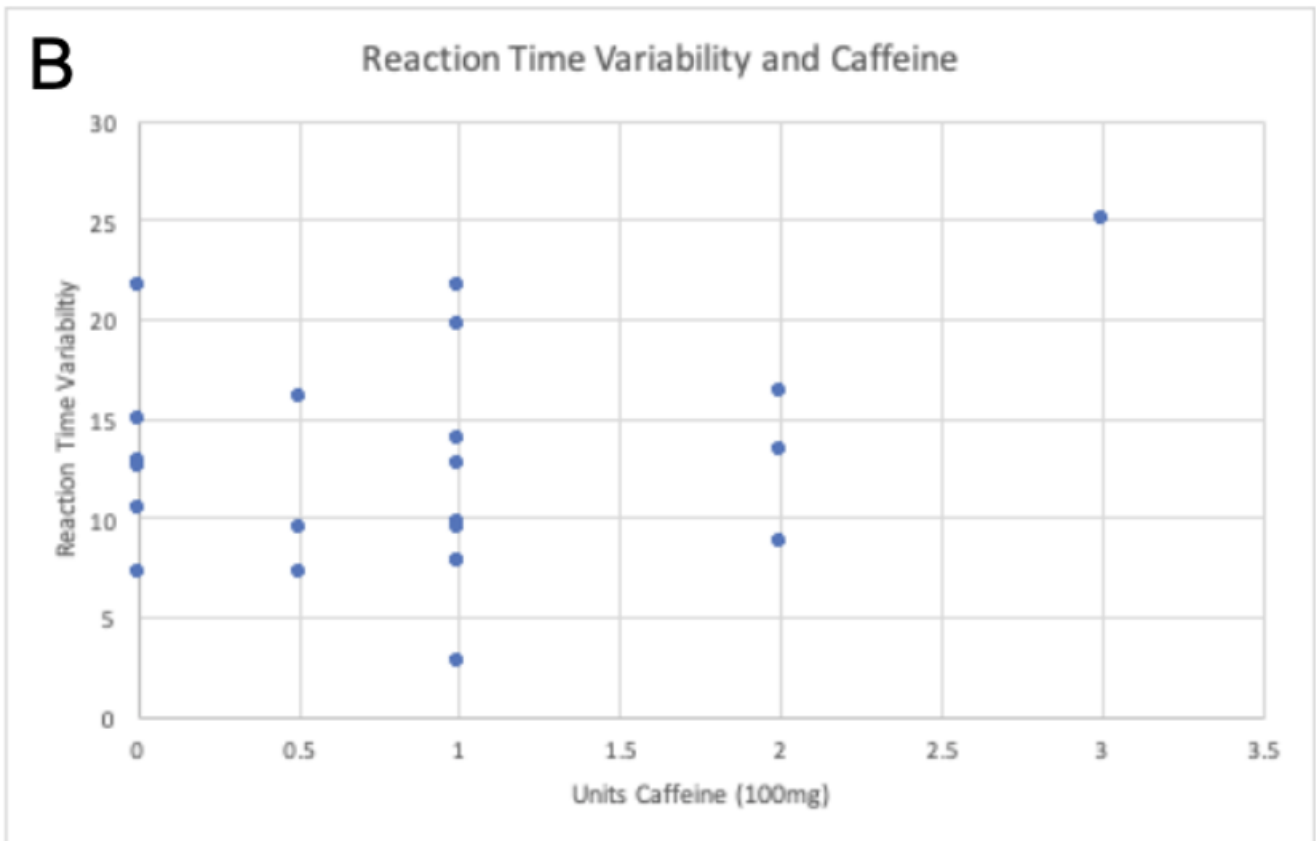
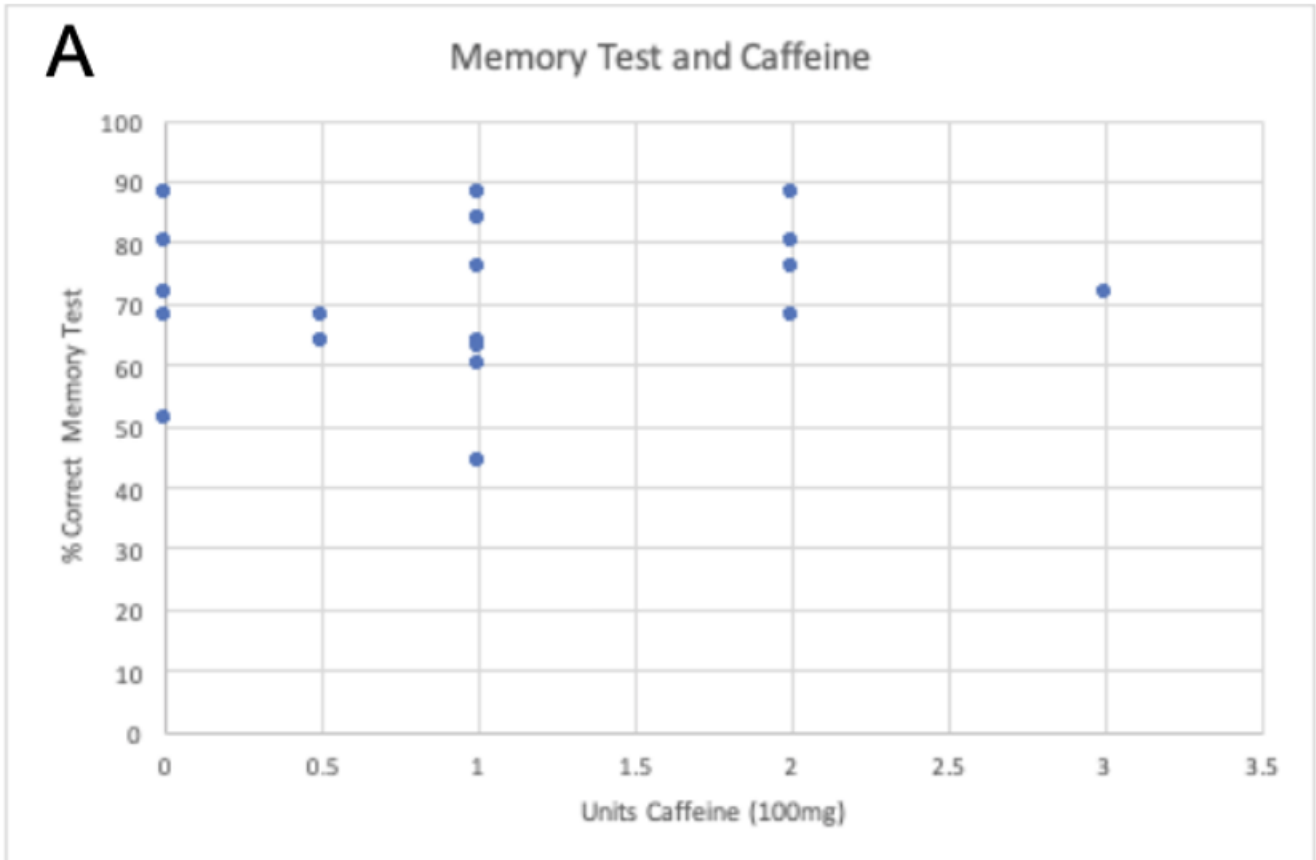


Figure 1. Raw data plots. **A)** Raw data plot of units of caffeine versus percent correct on memory test. No clear trend is shown by the raw data. **B)** Raw data plot of units of caffeine versus reaction time variability. No clear trend is shown by the raw data.

Figure 2 compares the results of caffeine consumers against those who do not consume caffeine. The raw data plots in **Figure 2** (A) and (C) do not show clear trends of differences between the two groups for both memory scores and reaction time variability, as demonstrated by the low R^2 values. Each R^2 value was less than 0.1, indicating essentially no correlation. **Figure 2** (B) and (D) compare the average memory score and reaction time variability between the caffeine and no-caffeine subjects. No caffeine subjects had a higher memory score than caffeine users on average. **Figure 2** (D) shows that caffeine users had a larger average reaction time variability than no caffeine subjects.

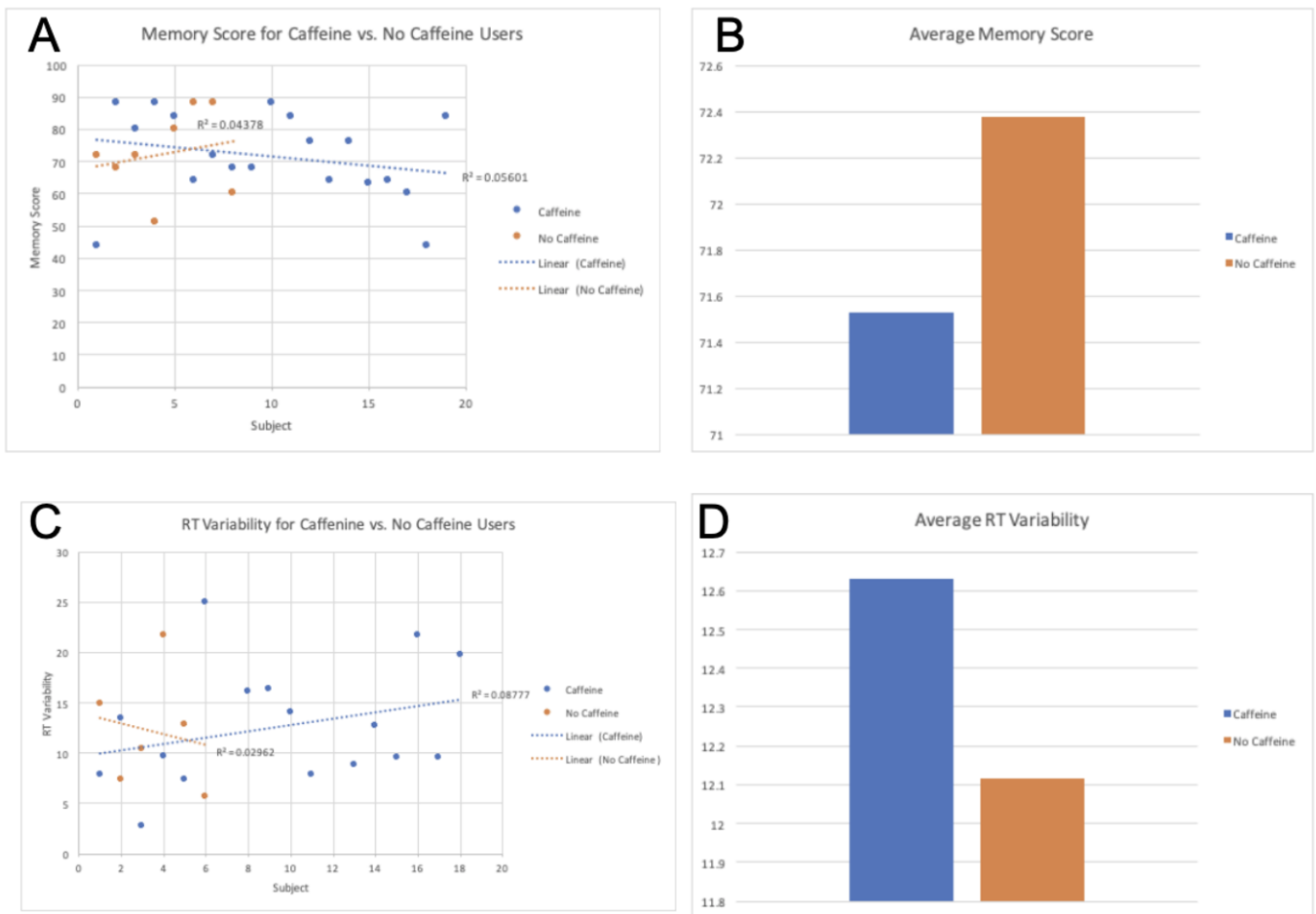


Figure 2.

Table 1. ANOVA Analysis Results

To analyze the data, we used MATLAB ANOVA analysis and Excel. **Figure 3** shows the results from the ANOVA sequential sums model. We used a model statement “caffeine = memory + RTV” to determine how caffeine intake was related to memory scores and reaction time variability. The coefficient of determination for the model was reported as $R^2 = 0.97182$ with a standard error of 0.70711. This demonstrates that caffeine intake can be modeled using the two factors. However, using other model statements didn’t have nearly the same R^2 values and memory wasn’t able to be modeled using the other factors. This provides insight into the relationship of factors but not of memory by itself.

Variable Names in Input Dataset

ID
 RT
 RTV
 memeory
 Caffeine
 memoryRT

Enter class or model statement or type ex for examples

```
lm>> class model caffeine = RTV + memeory
```

Enter model statement

```
lm>> model Caffeine = RTV + memeory
```

Sequential Sums of Squares ANOVA Table

Source	df	SS	MS	F	P-val
RTV	24	16.4917	0.68715	1.3743	0.597920
memeory	4	0.7500	0.18750	0.3750	0.822190
Error	1	0.5000	0.50000		

R-square 0.97182

Standard Error 0.70711

Figure 3.

Discussion

Based on the plots and ANOVA analysis, caffeine usage does not seem to enhance memory performance. There was no significant difference in memory performance between caffeine consumers and those who do not consume caffeine in the raw data. However, the averaged data implies that caffeine might negatively impact memory, as well as reaction time variability. Non-caffeine consumers had an overall higher memory score, indicating better performance over the caffeine consumers. These results indicate that caffeine might have the opposite effect on working memory than what was predicted. In addition, the averaged data showed that caffeine consumers had a higher reaction time variability than non-caffeine consumers. Since a higher reaction time variability corresponds to inconsistent reaction times, these results imply that long term consumption caffeine could be connected to a decrease in attention, even though temporally immediate consumption of caffeine increases attention. Caffeine consumption was heavily correlated to reaction time variability and memory through ANOVA analysis (R=.97182) suggesting

that modeling using both factors gives a clearer predictive measure of caffeine intake. However, this is likely due to the connected nature of reaction time variability and memory, which does not provide useful information as to the role caffeine is playing in either of these functions specifically.

While the data does not show extremely clear trends, it is possible that caffeine could be related to poor memory scores and high reaction time variability. The impact of sugar intake with caffeine also appeared to be negligible. This general result suggests that the human brain returns to a baseline of function with consistent caffeine and sugar intake although more testing would be required to confirm this assertion.

This study was limited in both sample size and choice of cohort. As students, and particularly engineering students, are a group requiring high levels of focus, memory, and attention span, the results of our study are implicating a smaller population instead of the general caffeine consumer. As brain function is complex and dynamic, studying a more diverse group of individuals would likely yield more insight. The cohort model did allow us to test individuals in their natural state of caffeine consumption, which is an interesting aspect of this study not usually emphasized as often data is compared with the immediate effects of caffeine between caffeine and non-caffeine drinkers.

Conclusion

Although the results of this study did not provide conclusive evidence into the effect of caffeine on this particular cohort as it relates to memory and reaction time variability, the study brings up interesting questions surrounding consistent caffeine use. Caffeine consumption was heavily correlated to reaction time variability and memory through ANOVA analysis ($R=.97182$) although the statistical analysis wasn't consistently useful for other factors and modeling methods casting a caution on the conclusions drawn from it. Concludingly, cohorts of more diverse subjects should be studied and collecting more data regarding the longevity of caffeine consumption could be insightful. Additionally, a longitudinal study following participants at varying points of caffeine consumption could lend to stronger comparison on a person-to-person basis. It is clear that memory, reaction time, reaction time variability, and sugar intake have some effect on brain function, but parsing out the nuances of these effects will take subsequent studies and additional information as to the linkage of such effectors.

Appendix

Survey accessible through this link:

References

1. Rózyk-Myrta Alicja. In Search of Memory Tests Equivalent for Experiments on Animals and Humans. *Medical Science Monitor*. 2014; 20 [DOI](#)
2. Pasman Wilrike J, Boessen Ruud, Donner Yoni, Clabbers Nard, Boorsma André. Effect of Caffeine on Attention and Alertness Measured in a Home-Setting, Using Web-Based Cognition Tests. *JMIR Research Protocols*. 2017; 6(9) [DOI](#)
3. Oei Adam, Hartley Laurence R.. The effects of caffeine and expectancy on attention and memory. *Human Psychopharmacology: Clinical and Experimental*. 2005; 20(3) [DOI](#)
4. Haller Sven, Montandon Marie-Louise, Rodriguez Cristelle, Moser Dominik, Toma Simona, Hofmeister Jeremy, Giannakopoulos Panteleimon. Caffeine impact on working memory-related network activation patterns in early stages of cognitive decline. *Neuroradiology*. 2017; 59(4) [DOI](#)